

**Evangelical Lutheran
Church of Durham**

~The church on the hill, lighting the
way to God's love.~

821 Durham Road—PO Box 100
Durham, PA 18039-0100
610-346-8500

www.durhamlutheran.org

Rev. David M. Deal, Pastor
610-346-8314

Ann Wong, Secretary
610-346-6020

EVANGEL



October 2019

In October ...

Saturday, October 5- Blessing of the Animals

Sunday, October 6 - Confirmation

Friday, October 11 - WELCA

Sunday, October 13 - Congregational Meeting

Sunday, October 20 - Healing Service and Youth Group

Saturday, October 25 - Youth SleepOut for Homelessness

Sunday, October 27 - Reformation Sunday, Hunter Aquino Confirmation

Monday, October 31- Reformation Day/Halloween

Inside this Issue ...

WELCA	2
Outreach & Prayer List	43
October Worship Assistants, Birthdays, Anniversaries	4
Care-A-Lot	5
Blessing of Animals	5
Parish Nurse	6
Healing Service	6
Mission Support Info	7-8
Disaster Relief	9
Calendar	10
Thank You's	11

"What is Our Mission?"

What is our mission as Christian disciples, as members of a congregation named Evangelical Lutheran Church of Durham?

- Is it to attend worship, to hear the Good News from God's Living Word?
- Is it to receive forgiveness and the Lord's Supper over and over again?
- Is it to bring our offerings so that the work of our congregation might continue? (Keep the lights on, the heat and air working, all the bills paid, etc.)
- Is it to pray for and support each other?

The truth is, all of the above are part of our mission, but only part. Our mission is much greater as defined by our Lord and Savior, Jesus Christ: "Go and make disciples of all nations, baptizing them in the name of the Father and of the Son and of the Holy Spirit, and teach them to obey everything that I have commanded you ..." is what Jesus said to his disciples after the Resurrection and before his Ascension. (Matthew 28:19-20)

WOW!!! That's a big ask. Often, it seems as though we're struggling to maintain our congregation and its needs. Now, our Lord is asking us to reach out to our community and world with the proclamation of the Good News by words and actions. Let's be real! We cannot impact the whole world alone. But we're not alone. We're members of a church that reaches every inhabitable continent. We're also members of the Evangelical Lutheran Church in America - five million members and more than 9,100 congregations. Each congregation is seeking to be faithful to its own and those close by. But together, the ELCA faithful can do much more to reach all the nations.

One of the main ways we accomplish Jesus' Great Commission to us is through our "Mission Support." Mission Support represents what happens in Christ's name beyond 821 Durham Road. In your annual offering envelope packets, there are four special "Mission Support" envelopes, one each in January, April, July, and October. The gifts you present in these envelopes help us to do amazing work, along with the rest of the ELCA. You will find a special page inside this newsletter spelling out all the things "Mission Support" is used for.

(continued on page 2)

Please place a special gift in your October Mission Support envelope. In doing so, you join all Jesus' disciples in our mission together!

~ Pastor David Deal



Summer Bible study: We finished our Bible study on Esther; and want to thank Kathy Hlavaty for hosting our last two sessions.

September meeting: The topic of our September meeting was water. We shared information and concerns discussed at the synod-wide gathering of Women of the ELCA last June.



Helen Dungan

The vast bulk of our world is ocean and seas. As land is above sea level, water on land flows downward to the seas – picking up pollutants as it travels. The amount of drinkable water is miniscule compared to the vast quantiles that is either saline or polluted. In Flint, water from the Flint River, which was very polluted, was used with extensive chorine to purify it. The chlorine ate the iron pipes it was being transported through subjecting those drinking it to serious health issues. Filters have been installed in Flint and the pipes to houses are being replaced, but people with immunity impairments which make them extremely susceptible to infection are being cautioned not to drink the water. Salem Lutheran and Shiloh Baptist churches in Flint are delivering water to 170 such vulnerable homes. The cost of this runs about \$5,000 per month and is being paid by donations.

Locally, we are dealing with water contaminated by PFAS (Per- and polyfluoroalkyl substances) which was part of firefighting foam used on former military bases in Horsham and Warminster. Our area is going to be part of a study on the health effects of this which hopefully will offer help to those medically affected by PFAS. In the meantime, Hope Grosse, our speaker in June, recommends everyone install a **reverse osmosis water filter**. If you buy bottled water, be sure it has been filtered by reverse osmosis.

October meeting: We will meet on Friday October 11th at 11 AM in the church fellowship hall. This will be a planning and business meeting. We will assess what projects we have to address; what fun activities we would like to sponsor; and what topics we would like to discuss.

Don't Miss ...

Saturday, October 5 at 11 AM - Blessing of the Animals in the churchyard. Bring your pets on leashes or in carriers.

Sunday, October 13 at 10:30 AM - Special Congregational Meeting to hear proposals for new main doors to the church.

Sunday, October 20 at 10:30 AM - Healing Service, with Rev. Donna T. Deal preaching.

Sunday, October 27, Reformation Sunday at 10:30 AM - Confirmation of Hunter Aquino.



Food ministry: Thanks to everyone who donated food for our Harvest Home collection. The food and money will be split between the Upper Bucks foodbank and ProJeCt of Easton's foodbank.

In October, we will collect nonperishable food items with a Thanksgiving theme, e.g. things like canned sweet potatoes, cranberry sauce, green bean casserole fixings etc.



October Worship Assistants	6*	13	20 *	27*
Youth Acolyte/ Communion Assistant	Matthew Mueller	Samantha Mueller	Addyson Mammana	Conner Aquino
Greeter(s)				
Lay Worship Assistant/ Lector	Kerri Rhine	Bea von Watzdorf	TBA	TBA
Council Communion Assistants	Serena Ashmore Matthew Mueller		Serena Ashmore Matthew Mueller	
Counters	Serena Ashmore and Matthew Mueller			
Altar Guild	Serena Ashmore and Dot Peterman			
Head Usher	* Indicates Holy Communion will be served			

	OCTOBER BIRTHDAYS		OCTOBER ANNIVERSARIES		OCTOBER BAPTISMS
1	Ed Haney, Jessica Lehr, Scott Lehr, Jeremy Roney			1	Barb Naska
2	Austin Apgar				
5	David Deal, Conner Aquino, Silas Rodenbach (88)	5		4	Alison & Emerson Rhine
6	Virginia Hager			6	Joan Mammana
7	Lois Altemose	13	Bruce and Lisa Crouse (29)		
18	Karen Bolesta	15	Val and Paul McGinn (25)	15	Sharron Streletz
19	Joanne Antoni				
20	LeeAnn Kressman	20	Linda and David Sauter (38)		
21	Ed Xander (82)	22	Diane and Steve DeWalt (36)		
				23	David Deal
25	Cheryl Mesko			25	Jim Nicholas, Silas Rodenbach
30	Benjamin J. Naska			30	Jessica Fisher Johnson
31	Nicole Crouse			31	Adam Mesko



Fall has arrived and we're all excited about the events scheduled for October. We'll be taking our annual field trip to Trauger's Farm. The children will be learning about all of the vegetables and crops that grow on the farm. They'll also be able to sample some of them. The ride in the hay wagon is a wonderful way to tour the farm and at the end they are rewarded with apple cider and a pumpkin. It's a rewarding morning and the children have a lot of fun.

We'll also have a visit from our neighborhood heroes, the Riegelsville Fire Department. The children will learn about fire safety and what to do in case there is a fire in their house. The children love to see the fire truck and the firefighters in their uniforms. We'll end the month with our special Halloween Parade with our masks that they made and many songs that we'll share with the parents. We'll also learn about spiders and bats and experiment on the states of water.

Our Care-A-Lot Theme with Pastor Dave for this month is : "Helping Everyone". The children look forward to his visit each week as we learn about stories from the Old Testament.

Care-A-Lot will again be participating in the Giant A+ Rewards Program. Last year we made \$364.64 from the program, just because people signed up to be a part of the program and put Care-A-Lot as their recipient. Information flyers about how to sign up for the program are available on the narthex table. The program runs from October through the end of March. All you will need is your 11-digit Bonus Card number. The school will earn 1% of the total amount you spend during that time period and a check is sent to the school. It's an easy and convenient fundraiser. You can ask your friends and family to also take part in the program. The more that sign up the more we receive. REMINDER: IF YOU SIGNED UP LAST YEAR, YOU DO NOT HAVE TO SIGN UP AGAIN. If you have any questions please contact me. Thank you in advance.

Enjoy the Beautiful Fall Season!!

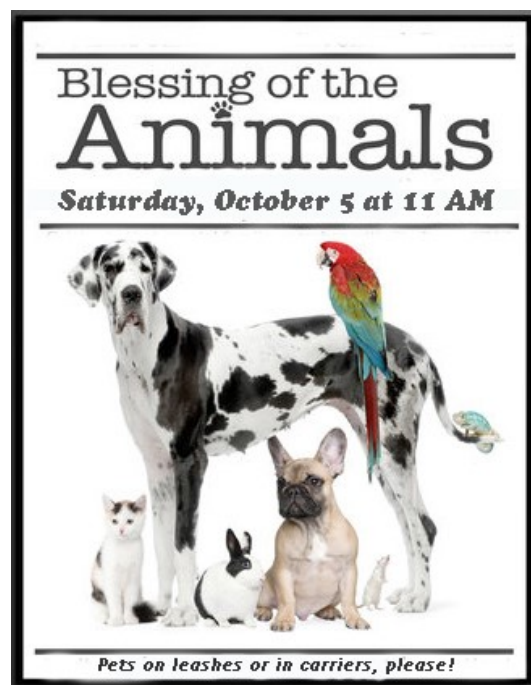
~Linda Reinbold

Blessing of the Animals!

Saturday, October 5 at 11 AM

- Join us outside on the church lawn (weather permitting) for a ceremony (about 20 minutes long) honoring St. Francis of Assisi, Lover of Animals.
- Bring your pets/animals (dogs, cats, goats, chickens, rabbits, birds, etc.) on a leash or in a carrier or cage.

See you then, with your feathered, furred, and finned friends!





Special Congregational Meeting - Sunday, October 13
at 10:30 AM
to hear about the new church doors proposal
It's important that everyone attend!

SERVICE OF HEALING / LAYING ON OF HANDS

Sunday, October 20 at 10:30 AM

Guest Preacher: Rev. Donna T. Deal

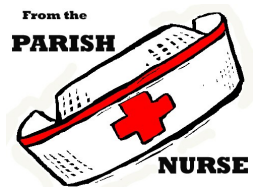
**Special scripture, music, prayers, and an opportunity
for worshipers to come forward and request prayer for
themselves or a loved one.**

Holy Communion will be served.



What is Juuling???

Juul is the newest electronic cigarette device on the market and it's targeting our youth. It looks like a flash drive and is filled with nicotine. It is the most popular tobacco product used by teens. In the past two years, Juul has acquired more than 45% of the U.S. electronic cigarette market. (Campaign for Tobacco-Free Kids. April 4, 2018)



Juuling creates small vapor puffs and can go undetected. Also, the device can be charged on laptops. The nicotine cartridge or pod delivers about 200 puffs. The same as one pack of cigarettes. Nicotine is highly addictive and using e-cigarettes increases the probability of using conventional cigarettes. Nicotine use among teens has been shown to have damaging effects on brain development. The vapor from e-cigarettes contains toxic chemicals, which are damaging to the lungs and brain.

The following are some Juul advertising targeting youth: *Juul uses an aerosol to activate ingredients using a regulated heating element, *It is easy to use, *It contains only the highest quality material and flavor ingredients, *Juul accommodates nicotine levels equal to a cigarette, *It satisfies the taste buds by coming in flavors, some are: Mango, Cool Mint, Fruit Melody, and Traditional Tobacco Flavor. These flavors are made from chemicals. Although they may be safe to eat in foods, they are not safe to be inhaled. *Juul can be purchased online (JUULvapor.com 2015) or in tobacco stores.

The FDA is making efforts to curb youth e-cigarette ("vape") use. They have made available to schools and teachers a free lesson plan and research activity to educate students on the risks. Campaign for Tobacco Free Kids, April 4, 2018. Juul and youth: rising e-cigarette popularity.

God Bless You, Mary Hurley, RN

MISSION SUPPORT INFO

How your offering becomes Mission Support

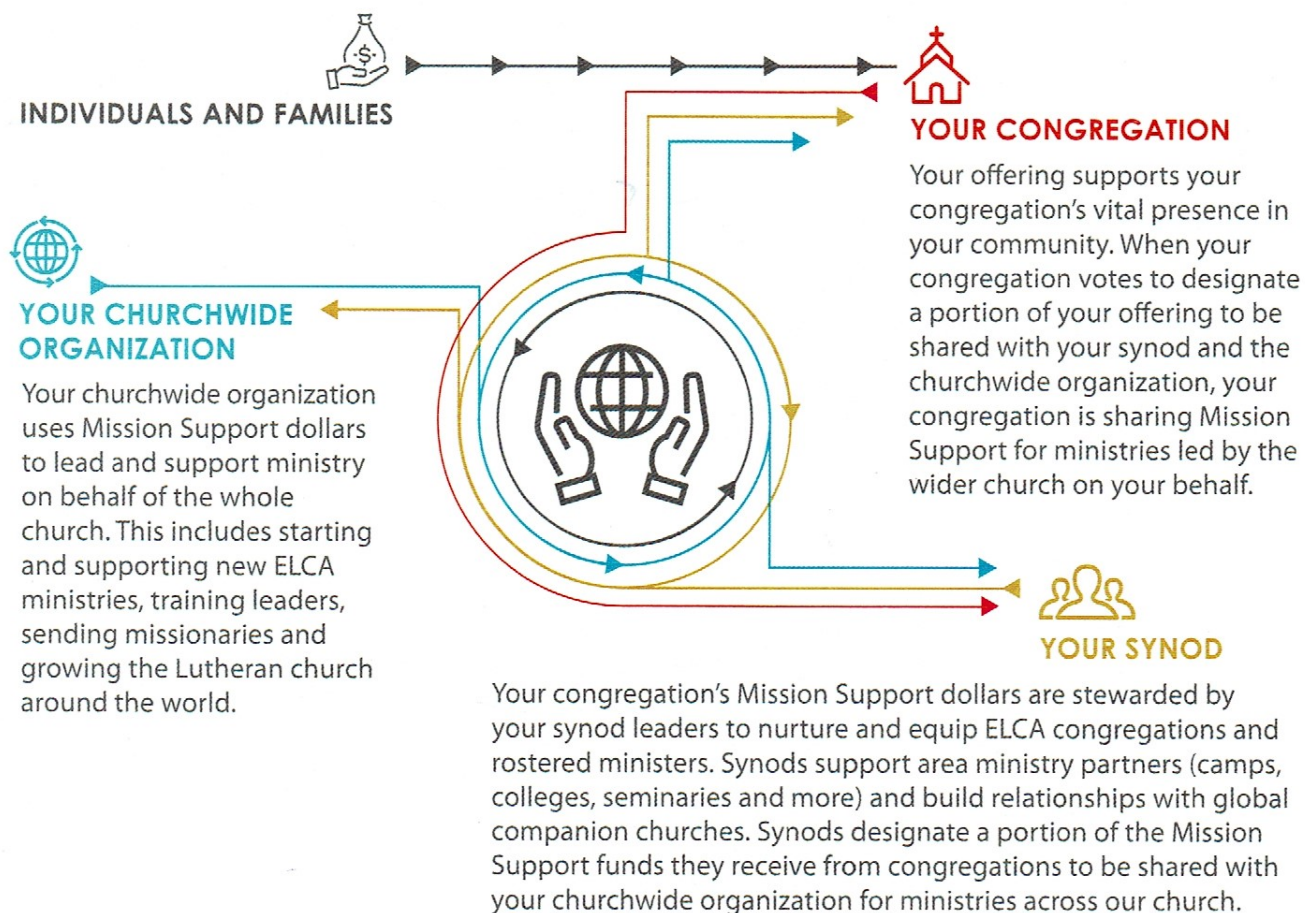
As Lutherans, we believe that Christ has freed us from sin and death, and even from ourselves, so we can love and serve our neighbors. One way we put our faith in action is by making a financial gift — an offering — to our congregation.

Each year, ELCA congregations pledge to send a portion of the offerings they receive to fund ELCA ministries in their synods and beyond. In the ELCA, we call these funds Mission Support.

Mission Support enables the ELCA's 65 synods and more than 9,100 congregations to pool resources to love and serve our neighbors in ways no individual or congregation can do alone. Mission Support is one way we are church together — it's essential to who we are as the ELCA.

Through Mission Support, we participate in God's life-changing work in our communities and around the world.

How Mission Support funds ministry across our church



2018 financial picture

In 2018, ELCA members gave \$1.7 billion in unrestricted offerings* to support God's mission and ministry through the three expressions of the ELCA. Thank you for your generosity!

94.5% — CONGREGATIONS

\$1.6 billion was stewarded by the ELCA's 9,100-plus congregations

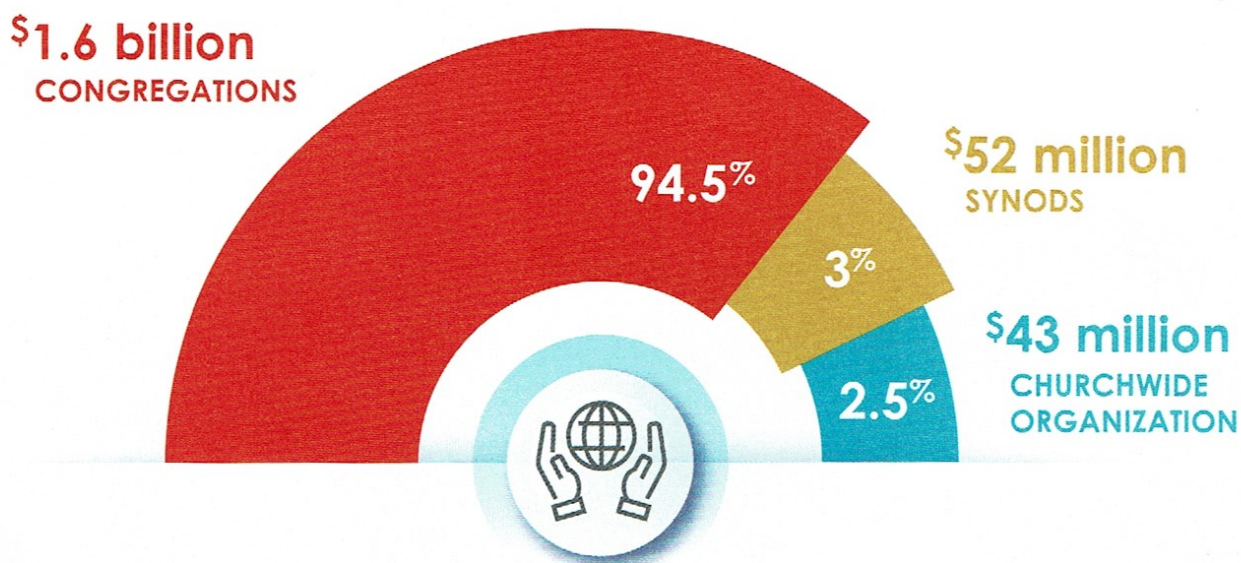
3% — SYNODS

\$52 million was stewarded by the ELCA's 65 synods

2.5% — CHURCHWIDE ORGANIZATION

\$43 million was stewarded by the ELCA churchwide organization

*Unrestricted offerings do not include special offerings (e.g., congregational capital improvements or gifts to ministries such as Lutheran Disaster Response).



Read on for stories of faith in action —
made possible by Mission Support!

HURRICANE DORIAN

SEPTEMBER 2019

ELCA.org/disaster

Hurricane Dorian has hit with devastating force, leading to major damage and a growing number of reported deaths in the Bahamas, and threatening the Carolinas with dangerous winds and storm surge.

Carolina Synod, the North Carolina Synod, Lutheran Services Carolinas and other partners who are preparing to respond.

With your support, Lutheran Disaster Response can provide survivors of this hurricane and others like it with immediate relief and can accompany them on the long road to recovery. Your gifts designated for "Hurricane response" will be used entirely (100%) for direct response until it is complete. Together, we can support those whose lives have been impacted by hurricanes.

In the Bahamas, where the impact of the hurricane has been devastating, Lutheran Disaster Response and the Florida-Bahamas Synod are collaborating to assess the immediate need for relief and recovery. Lutheran Disaster Response is also in communication with the South

YES, I WANT TO HELP!

- ☐ Lutheran Disaster Response: Hurricane response \$ DDG0087
- ☐ Lutheran Disaster Response: Where needed most \$ DDG0060

Name _____

Address _____

City _____ State _____ ZIP code _____

Email address _____

Give through your congregation or make your check out to
Lutheran Disaster Response and send to:

Evangelical Lutheran Church in America, ELCA Gift Processing Center
P.O. Box 1809, Merrifield, VA 22116-8009

Write "Hurricane response" or "Where needed most" on your check's memo line.



Evangelical Lutheran Church in America
God's work. Our hands.

REFORMATION SUNDAY

Rite of Confirmation Conferred on Hunter Aquino

October 27, 2019 at 10:30 AM





We will celebrate God's Amazing Grace given freely to each one of us. We will remember how God's Word through St. Paul, Martin Luther, and many others have constantly reminded us of our freedom from sin and promise of new life.

We will celebrate how that grace has increased the faith of young people like Hunter Aquino, who will affirm his faith on Reformation Sunday.

BE HERE TO CELEBRATE WITH HUNTER AND HIS FAMILY.
Refreshments and Fellowship will follow Worship.

October 2019

Sunday	Monday	Tuesday	Wednesday	Thursday	Friday	Saturday
		1 Care-A-Lot Preschool 9 AM - Noon	2 Care-A-Lot Preschool 9 AM - Noon	3 Care-A-Lot Preschool 9 AM - Noon	4	5 11 AM Blessing of the Animals
		8 Care-A-Lot Preschool 9 AM - Noon	9 Care-A-Lot Preschool 9 AM - Noon	10 Care-A-Lot Preschool 9 AM - Noon	11 11 AM WELCA	12 Pastor's Day Off
6 Sundays after Pentecost 9 AM Christian Education 10:30 AM Holy Communion 5:30 PM Confirmation at Trinity, PV	7					
13 Sundays after Pentecost 9 AM Christian Education 10:30 AM Worship Special Congregational Meeting to consider replacing the main doors	14 Columbus Day	15 Care-A-Lot Preschool 9 AM - Noon	16 Care-A-Lot Preschool 9 AM - Noon	17 Care-A-Lot Preschool 9 AM - Noon	18	19 Pastor's Day Off
20 St. Luke, Evangelist 9 AM Christian Education 10:30 AM Healing Service/Communion 5:30 PM D.R.A.T.T. Youth Group at St. Peter's, Riegelsville	21 7 PM Church Council	22 Care-A-Lot Preschool 9 AM - Noon	23 Care-A-Lot Preschool 9 AM - Noon	24 Care-A-Lot Preschool 9 AM - Noon	25 Youth Sleepout for the Homeless	26 Pastor's Day Off
27 Reformation Sunday 9 AM Christian Education 10:30 AM Holy Communion/ Rite of Confirmation: Hunter Aquino	28	29 Care-A-Lot Preschool 9 AM - Noon	30 Care-A-Lot Preschool 9 AM - Noon	31 Care-A-Lot Preschool 9 AM - Noon Reformation Day Halloween		



My sincere thanks and appreciation to everyone for the cards, prayers, and well wishes! Your healing thoughts are being felt each day!

Prayer is the key!

Love,
Carolyn



FRED AND MIMI FOERSTER
407 CHEROKEE STREET
EMMAUS, PA 18049
610-967-4678

September 15, 2019

Evangelical Lutheran Church of Durham
Pastor Deal
Peace!

Thank you for your prayers on my journey to healing and wholeness. My journey began in late March with bronchial pneumonia and "the flu" and continued in July with chemotherapy and radiation therapy until the end of September. I have been blessed by your prayers for a favorable outcome of healing and wholeness. Thank you!

Shalom!

Fred Foerster, Pastor Emeritus, St.
John's Lutheran Church, Emmaus

Evangelical Lutheran Church of Durham

"The church on the hill, lighting the way to God's love"

821 Durham Road - P.O. Box 100 - Durham, PA 18039-0100

Phone: 610-346-8500 e-mail: evangel@durhamlutheran.org

Web site: www.durhamlutheran.org

EVANGEL

October
2019

